



Sophos Enterprise Manager comprises a suite of powerful management tools. It enables the secure, automatic download and distribution of Sophos Anti-Virus (SAV) and the latest virus identity files from the Sophos databank – a dedicated Sophos website – to local file servers and desktops. The exposure of businesses to virus outbreaks is further reduced by allowing remote users to update their laptops while away from the office.

Network administrators are put in full control and can monitor their network at all times. Unprotected computers or those running an out-of-date version of Sophos Anti-Virus can be immediately and automatically updated. In practice, a network of 1000 or more clients can be updated from a single, central Windows machine within five minutes.

How it works

Enterprise Manager consists of five components:

Sophos Databank: a website containing the latest versions of Sophos Anti-Virus and virus identity files. It ensures reliable updates by restricting use exclusively to Enterprise Manager users.

EM Library: collects updates from the databank at pre-set times and on-demand. It pushes them out to central installation directories (CIDs) from where the desktops can automatically update themselves.

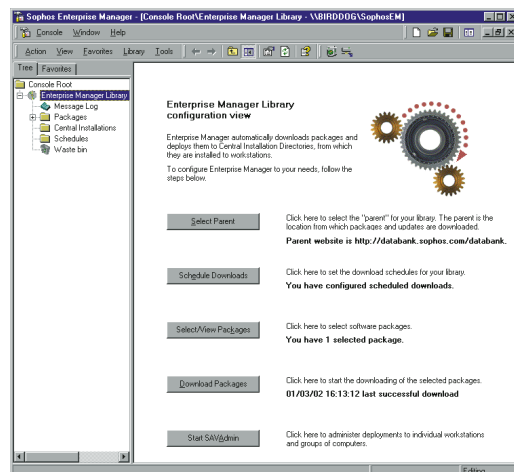
EM Console: used to configure EM Library.

SAVAdmin: used to deploy software to all Windows desktops automatically. The software allows real-time monitoring, reporting and control.

Remote Update: allows remote users to update their laptops/home computers manually or automatically with Sophos software from a CID on the company's website or network.

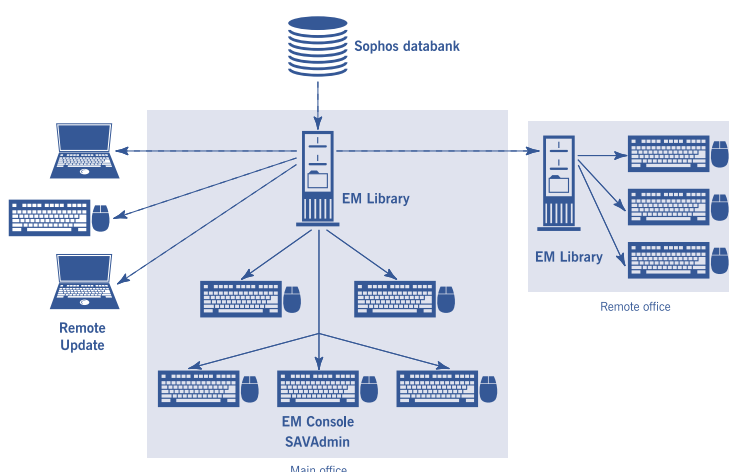
Features and benefits

- Offers fast, controllable, automatic and manual distribution of Sophos software enterprise-wide.
- Ensures complete protection by enabling remote update of individual laptops.
- Reduces bandwidth usage by minimising the transfer size of updates, sending only changed or new files.
- Provides a networked "audit" facility for SAV with real-time status monitoring of SAV installation, update, operation, version number and virus identities.
- Supports unattended installation of Sophos Anti-Virus across the network.
- Discovers new computers and installs Sophos Anti-Virus on them automatically.
- Distributes specified Sophos software to servers and workstations on any supported platform on the network.
- Supports hierarchical redistribution of software within the organisation over internet, intranet or WAN.
- Manages large networks by dividing computers into user-defined groups.
- Allows snapshots of networked computers to be stored and recalled.
- Allows displayed information to be sorted and filtered.
- Generates status reports.
- Includes 24-hour support, 365 days a year.



Sophos Enterprise Manager console

Function	Enterprise-wide administration and distribution of Sophos software*.
SAV platforms supported	Windows NT/2000/XP; Windows 95/98/Me.
EM Library	
System requirements	Windows NT 4 with service pack 6A or Windows 2000; Internet Explorer 5 or above.
Polling frequency	Up to 24 times a day and on demand.
Library-to-library connection	Via URL or UNC.
CID server support	Windows, NetWare 4+, Samba.
Proxy support	Yes.
EM Console	
System requirements	Microsoft Management Console 1.2 snap-in; runs on Windows NT/2000/XP.
SAVAdmin	
System requirements	Windows NT/2000.
Supported desktops	Windows 95/98/Me; Windows NT (Intel or Alpha)/2000/XP.
Protocols supported	All Windows-supported protocols, including TCP/IP and NetBEUI.
Browsing modes	Live network browsing – locates machines within active domains. Grouped network view – allowing computers and hierarchies to be logically structured, and providing information for each entry.
Adding machines to group lists	Drag-and-drop and copy-and-paste from the network list; import list from file.
Management capabilities	Real-time monitoring of Sophos Anti-Virus updates; remote installation of SAV; remote configuration of SAV (change CID, change account, alter scan settings, etc); status reporting of SAV.
Remote Update	
System requirements	Windows NT/2000/XP; Windows 95/98/Me.
Installation/update	Automatic installation of SAV when Remote Update is installed. Update on-demand or via the Windows scheduler. Connection via URL or UNC to company CID.
Proxy support	Yes.



* Credentials for a 30-day evaluation can be obtained from the Sophos website. Permanent credentials to access the databank are assigned by Sophos when a licence is purchased.

fs/030129